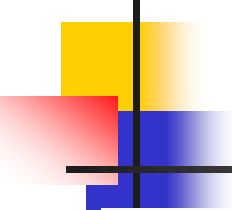




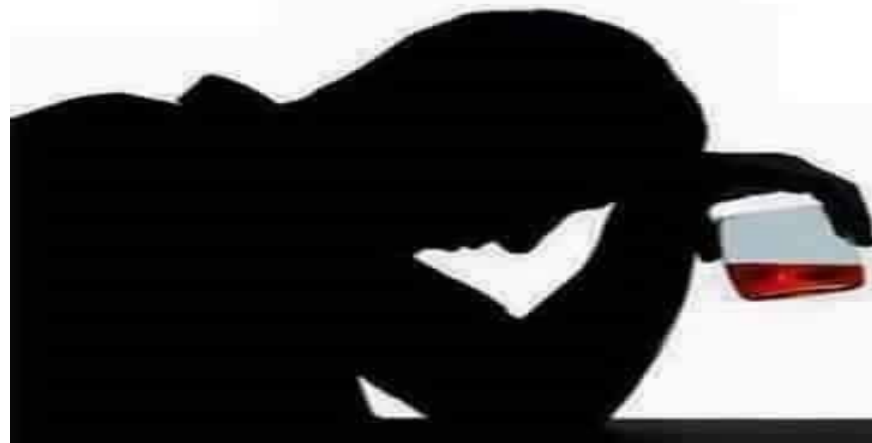
# ALCOHOL



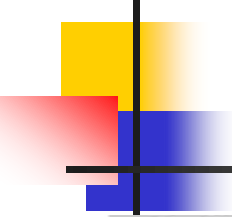
---

**Alcohol** is a very effective  
dissolving agent.

It dissolves families, marriages,  
friendships, jobs, bank accounts and  
neurons, but **NEVER** problems.



Proverbs 20:1  
Proverbs 23:20, 21  
Proverbs 23:29-35  
Hosea 4:11  
Ephesians 5:18



**29** Who has woe? Who has grief?  
Who has contention? Who has  
complaints? Who has wounds without  
cause? Who has bloodshot eyes?

**30** Those who linger over their wine,  
who consume mixed drinks.

**31** Don't stare into red wine, when it  
sparkles in the cup and goes down  
smoothly.

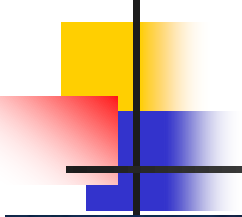
**32** Eventually it will bite like a snake  
and sting like a serpent.

**33** Your eyes will see strange things,  
and with slurred words you'll speak  
what you really believe.

**34** You will be like someone who lies  
down in the sea, or like someone who  
sleeps on top of a mast.

**35** "They struck me," you will say, "but  
I never felt it. They beat me, but I never  
knew it. When will I wake up? I want  
another drink."





---

And do not be drunk  
with wine, in which  
is dissipation; but be  
filled with the Spirit,  
Ephesians 5:18 NKJV

# Alcohol



# Consumption

# Facts and

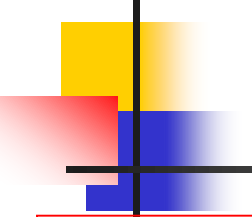
# Statistics

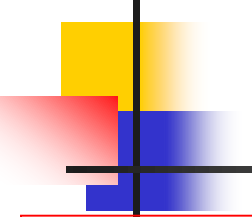


# Statistics

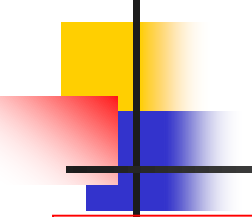
---

- **61 % of Americans drank alcohol last year**
- **33 % had five or more drinks on a given day**
- **21,634 alcohol induced deaths (excludes accidents and homicides)**
- **12,928 alcohol induced liver disease deaths**
- **over 100,000 deaths if you include accidents, homicides, liver disease**
- **14 million Americans are totally addicted**

- 
- 
- **At least once a year, the guidelines for low risk drinking are exceeded by an estimated 74% of male drinkers and 72% of female drinkers aged 21 and older**
  - **65% of youth surveyed said that they got the alcohol they drink from family and friends**
  - **Youth who drink alcohol are 50 times more likely to use cocaine than those who never drink alcohol**
  - **Among current adult drinkers, more than half say they have a blood relative who is or was an alcoholic or problem drinker**

- 
- **Across people of all ages, males are four times as likely as females to be heavy drinkers**
  - **More than 18% of Americans experience alcohol abuse or alcohol dependence at some time in their lives**
  - **Traffic crashes are the greatest single cause of death for persons aged 6–33. About 45% of these fatalities are in alcohol-related crashes**
  - **Underage drinking costs the United States more than \$58 billion every year — enough to buy every public school student a state-of-the-art computer**



- 
- **Alcohol is the most commonly used drug among young people**
  - **Problem drinkers average four times as many days in the hospital as nondrinkers — mostly because of drinking-related injuries**
  - **Concerning the past 30 days, 50% of high school seniors report drinking, with 32% report being drunk at least once**
  - **Alcohol kills 6½ times more youth than all other illicit drugs combined**



# Alcohol concentration

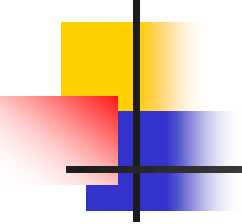
---

# Blood Alcohol Concentration Estimate – for Men

Drink s <sup>A</sup>	Body Weight In Pounds								Influence <sup>B</sup>
	100	120	140	160	180	200	220	240	
1	.04	.03	.02	.02	.02	.02	.02	.02	Possibly
2	.08	.06	.05	.05	.04	.04	.03	.03	Impaired
3	.11	.09	.08	.07	.06	.06	.05	.05	
4	.15	.12	.11	.09	.08	.08	.07	.06	
5	.19	.16	.13	.12	.11	.09	.09	.09	DUI
6	.23	.19	.16	.14	.13	.11	.10	.09	DUI
7	.26	.22	.19	.16	.15	.13	.12	.11	
8	.30	.25	.21	.19	.17	.15	.14	.13	
9	.34	.28	.24	.21	.19	.17	.15	.14	
10	.38	.31	.27	.23	.21	.19	.17	.16	

<sup>A</sup> One drink is 1.25 oz. of 80 proof liquor, 12 oz. beer, or 5 oz. of wine

<sup>B</sup> Subtract .01 for each hour of drinking

- 
- 
- Despite the tireless efforts of thousands of advocates, impaired drivers continue to kill someone every 30 minutes, nearly 50 people a day, and almost 18,000 citizens a year. Remember — **impairment begins with the first drink**
  - **The body metabolizes alcohol at the rate of about one drink per hour.** Does drinking strong coffee or taking a cold shower have an effect on the person who is drunk? The answer is yes — the result being an alert, cold, and wet drunk. **Time, and only time can sober a person up.**

# Blood Alcohol Concentration – for Women

Drinks <sup>A</sup>	Body Weight In Pounds								Influence <sup>B</sup>
	90	100	120	140	160	180	200	220	
1	.05	.05	.04	.03	.03	.03	.02	.02	Possibly
2	.10	.09	.08	.07	.06	.05	.05	.04	Impaired
3	.15	.14	.11	.10	.09	.08	.07	.06	
4	.20	.18	.15	.13	.11	.10	.09	.08	DUI
5	.25	.23	.19	.16	.14	.13	.11	.10	
6	.30	.27	.23	.19	.17	.15	.14	.12	
7	.35	.32	.27	.23	.20	.18	.16	.14	
8	.40	.36	.30	.26	.23	.20	.18	.17	
9	.45	.41	.34	.29	.26	.23	.20	.19	
10	.51	.45	.38	.32	.28	.25	.23	.21	

<sup>A</sup> One drink is 1.25 oz. of 80 proof liquor, 12 oz. beer, or 5 oz. of wine

<sup>B</sup> Subtract .01 for each hour of drinking



# Alcohol Effects

---

Every year, more money is spent promoting the use of alcohol than any other product. Perhaps through its elaborate and creative marketing, the most basic, yet important fact about alcohol is often overlooked — **alcohol is a drug** — the most commonly used and widely abused psychoactive drug in the world. **Alcoholism is a disease — a chronic, progressive, fatal disease if not treated.**



# Short Term Effects

**Even at low doses, alcohol significantly impairs the judgment and coordination required to drive a car or operate machinery safely. Low to moderate doses of alcohol can also increase the incidence of a variety of aggressive acts, including domestic violence and child abuse.**

**Effects of moderate alcohol intake include dizziness and talkativeness. The immediate effects of a larger amount of alcohol include slurred speech, disturbed sleep, nausea, and vomiting. "Hangovers" are another effect after large amounts of alcohol are consumed — symptoms including headache, nausea, thirst, dizziness, and fatigue.**



# Long Term Effects

---

- Prolonged, heavy use of alcohol can lead to addiction (alcoholism). Sudden cessation of long term, extensive alcohol intake is likely to produce withdrawal symptoms, including severe anxiety, tremors, hallucinations, and convulsions.
- Long-term effects of consuming large quantities of alcohol can lead to:
  - permanent damage to vital organs
  - several different types of cancer
  - gastrointestinal irritations, such as nausea, diarrhea, and ulcers
  - malnutrition and nutritional deficiencies
  
  - high blood pressure
  - lowered resistance to disease
- **Mothers who drink alcohol during pregnancy may give birth to infants with fetal alcohol syndrome.** These infants may suffer from mental retardation and other irreversible physical abnormalities. In addition, research indicates that children of alcoholic parents are at greater risk than other children of becoming alcoholics





# What Does God Think of It

- ***Lev 10:8-11 Then the LORD spoke to Aaron, saying: 9 "Do not drink wine or intoxicating drink, you, nor your sons with you, when you go into the tabernacle of meeting, lest you die. It shall be a statute forever throughout your generations, 10 that you may distinguish between holy and unholy, and between unclean and clean, 11 and that you may teach the children of Israel all the statutes which the LORD has spoken to them by the hand of Moses."***



# Why, they drank wine in Bible

---

- **I agree, it is all through the Bible**
- **But how does the Bible talk about it, is it with fondness or remorse**
- **20:1 Wine is a mocker, Strong drink is a brawler, And whoever is led astray by it is not wise.**
- **Prov 21:17 He who loves pleasure will be a poor man; He who loves wine and oil will not be rich.**



# Strong drink causes us to sin

---

- **Woe to the Wicked**
- **Hab 2:5 "Indeed, because he transgresses by wine , He is a proud man, And he does not stay at home Because he enlarges his desire as hell, And he is like death, and cannot be satisfied,**

# What are the results of our drinking alcohol

- Jesus said, "Wherefore by their fruits ye shall know them" (**Matt. 7: 20**).
- 1 Peter 4:2-5 For we have spent enough of our past lifetime in doing the will of the Gentiles — when we walked in **lewdness, lusts, drunkenness, revelries, drinking parties, and abominable idolatries.** 4 In regard to these, **they think it strange** that you do not run with them in the same flood of dissipation, **speaking evil of you.** 5 They will give an account **to Him** who is ready to judge the living and the dead

Abstain from the very  
Appearance of Evil !

---

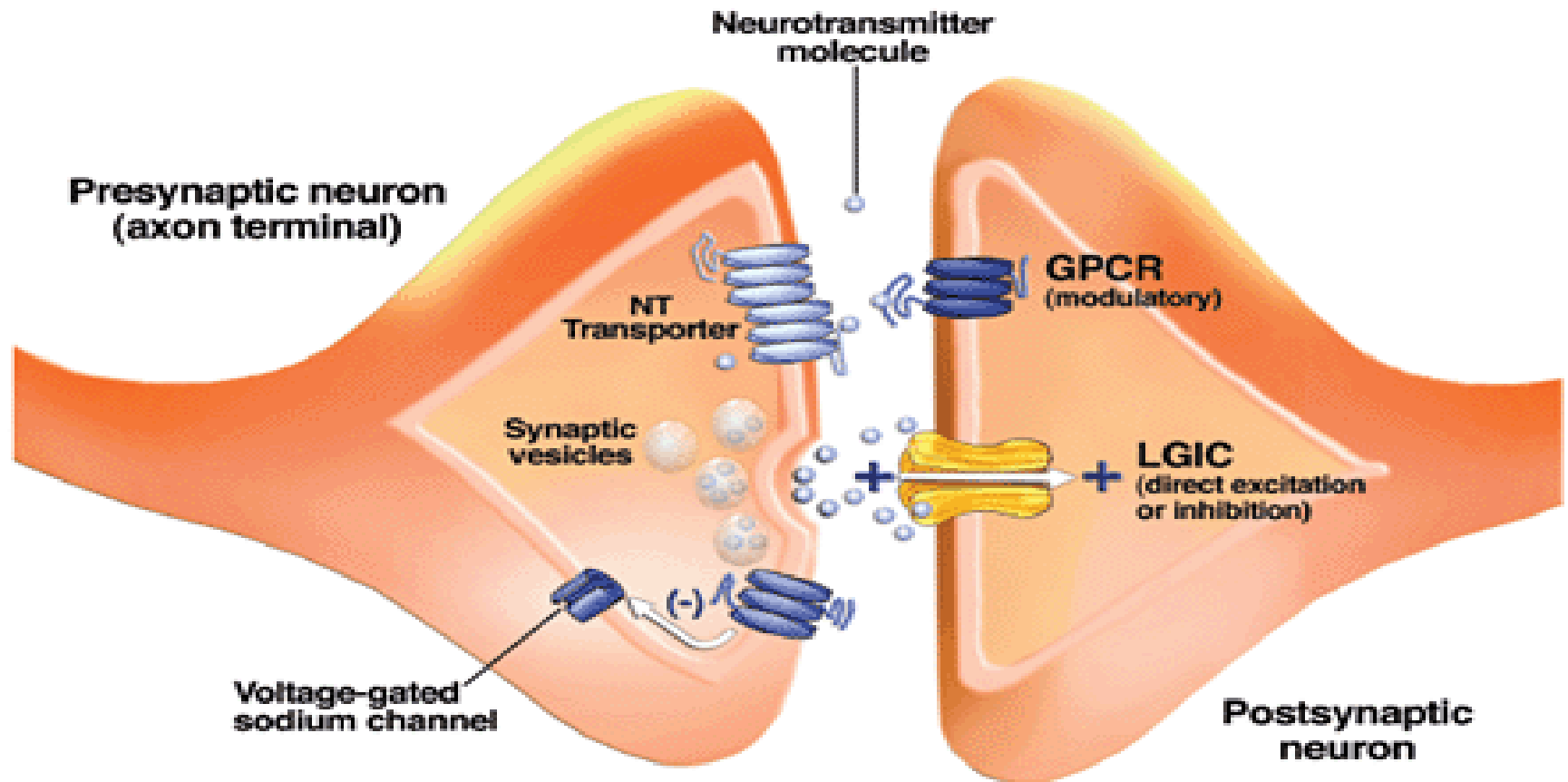
**It's God's Law !**



Proverbs 20:1 KJV

**Wine is a mocker, strong drink  
is raging: and whosoever is  
deceived thereby is not wise.**

# What happens to the Brain when someone drinks alcohol ?





# **ALCOHOL**

**PUTS YOU AT RISK FOR**

**liver damage  
heart disease  
certain cancers  
memory loss**



A hand is shown holding a brown glass bottle of alcohol, tilted at an angle. A single drop of liquid is falling from the neck of the bottle. The background is dark and textured. The word 'ALCOHOL' is written in large, white, bold, sans-serif capital letters in the upper left quadrant. Below it, another line of text reads 'The legal drug destroying families for thousands of years'.

**ALCOHOL**

**The legal drug destroying  
families for thousands of  
years**

*F. Karygin, 2004*