

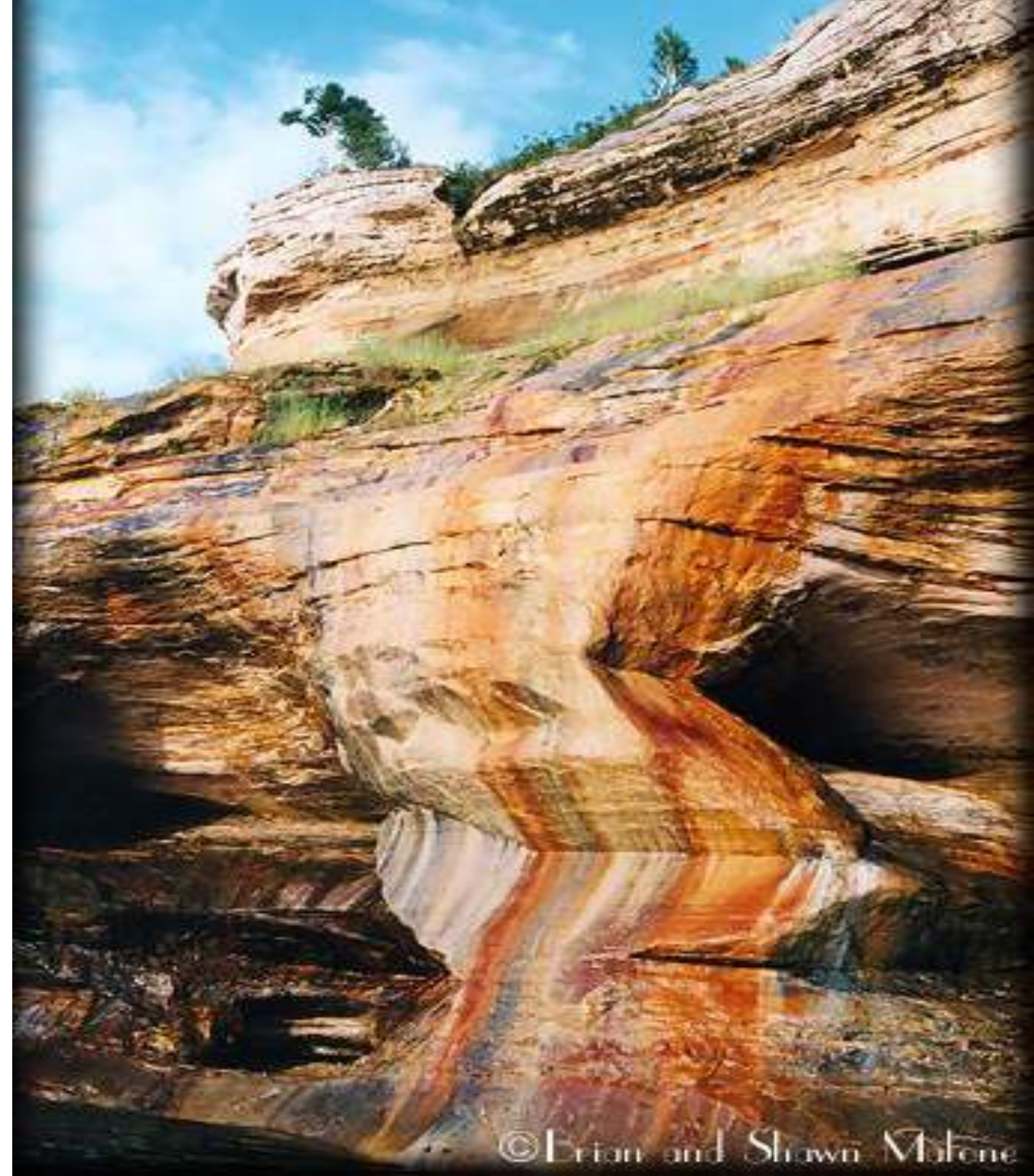
Evolution and The Christian

Click to add text

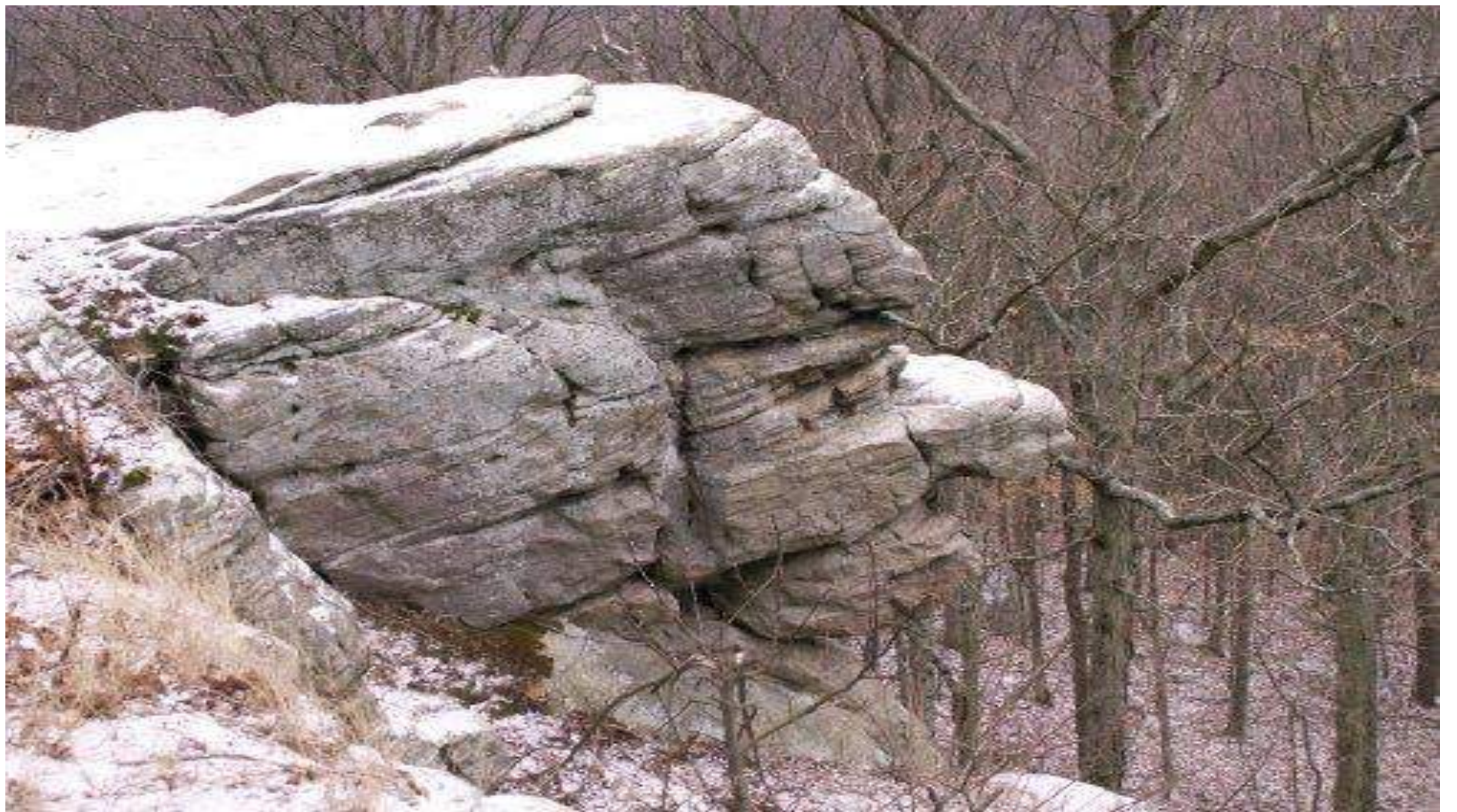
The Case for Intelligent Design

- Design inference
- Irreducible systems

Design Inference





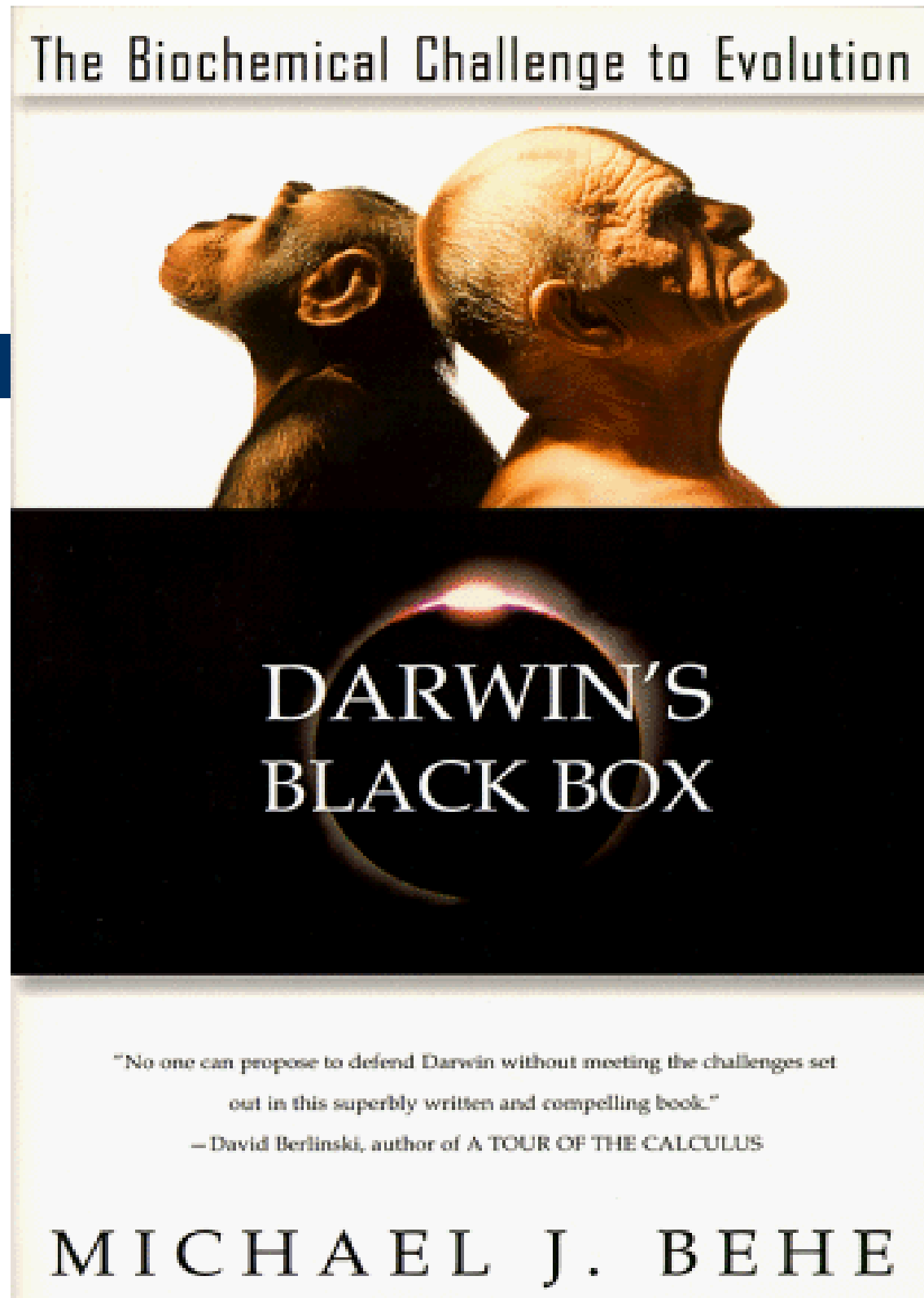




God is the designer

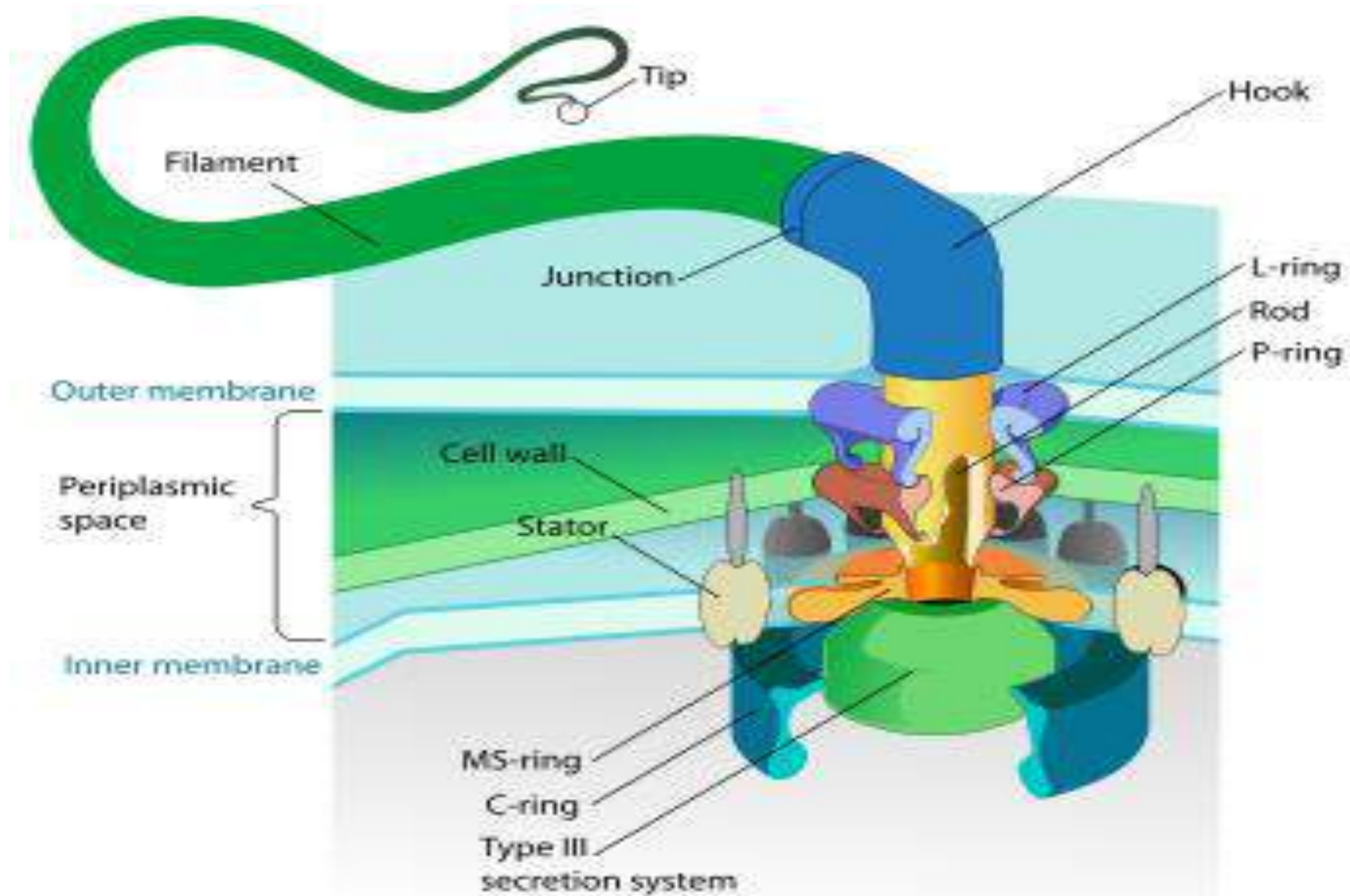
- Ps 19:1
- 1 The heavens declare the glory of God; and the firmament shows His handiwork.
- (NKJ)

Irreducible systems

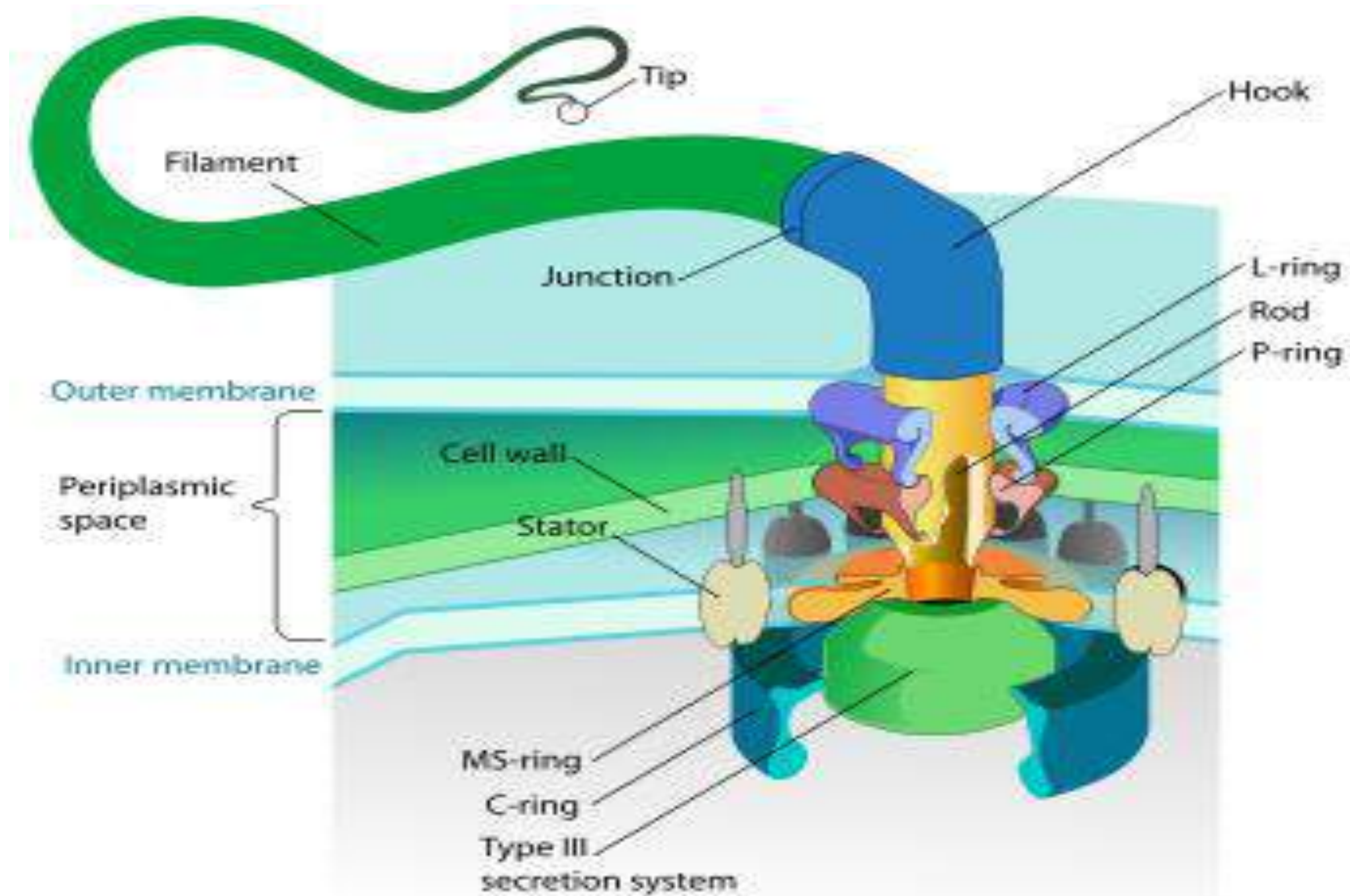


Irreducible systems

- The bacterial flagellum
- Clotting cascade
- Immune system
- Cellular transport system







INTRINSIC PATHWAY

Damaged surface

Kininogen
Kallikrein

XII

XII_a

XI

XI_a

IX

IX_a

VIII_a

X

X_a

V_a

Prothrombin
(II)

Thrombin
(II_a)

Fibrinogen
(I)

Fibrin
(I_a)

XIII_a

Cross-linked
fibrin clot

FINAL
COMMON
PATHWAY

EXTRINSIC PATHWAY

Trauma

VII_a

VII

Tissue
factor

Trauma

X

X_a

X

Prothrombin
(II)

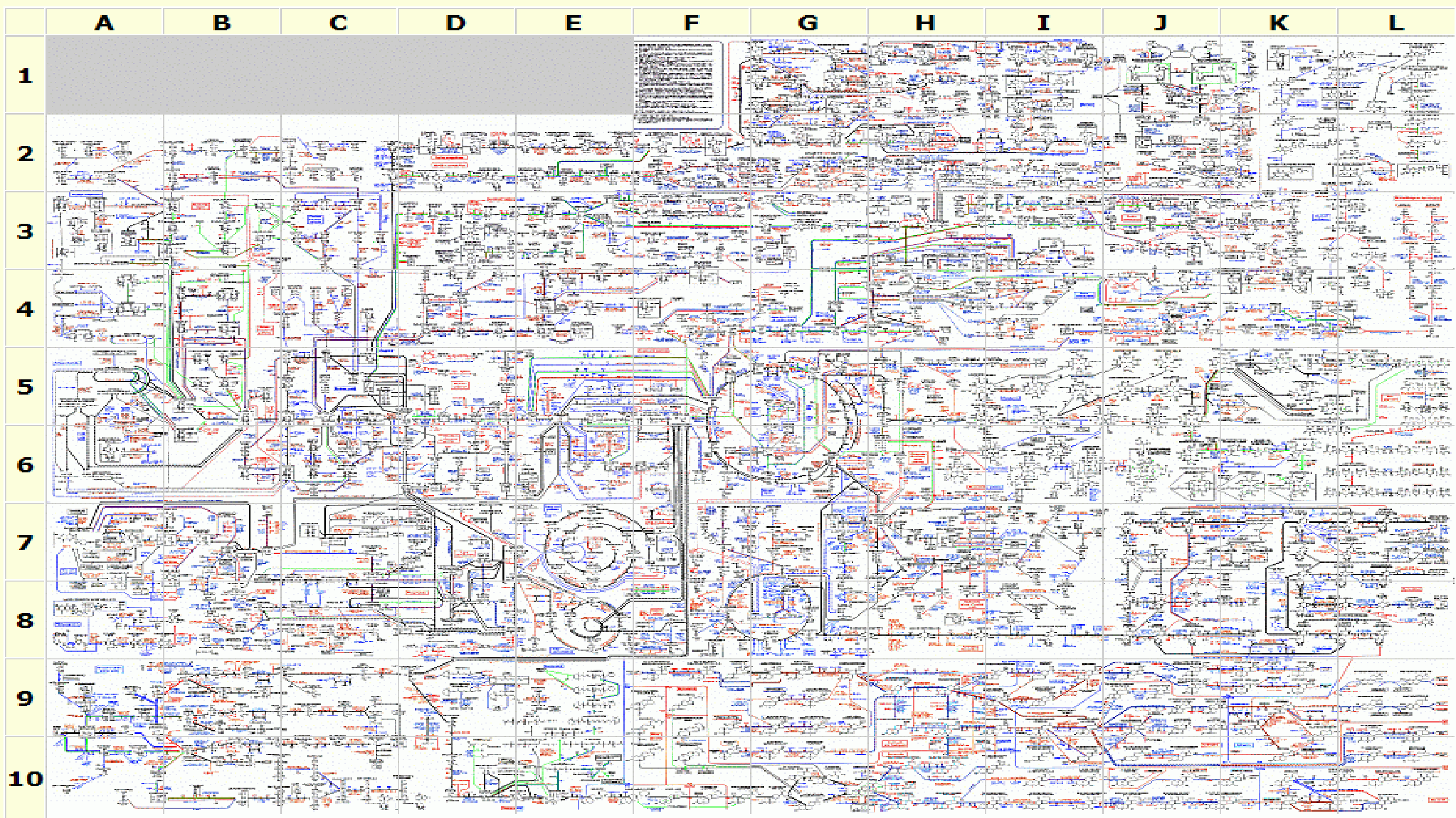
Thrombin
(II_a)

Fibrinogen
(I)

Fibrin
(I_a)

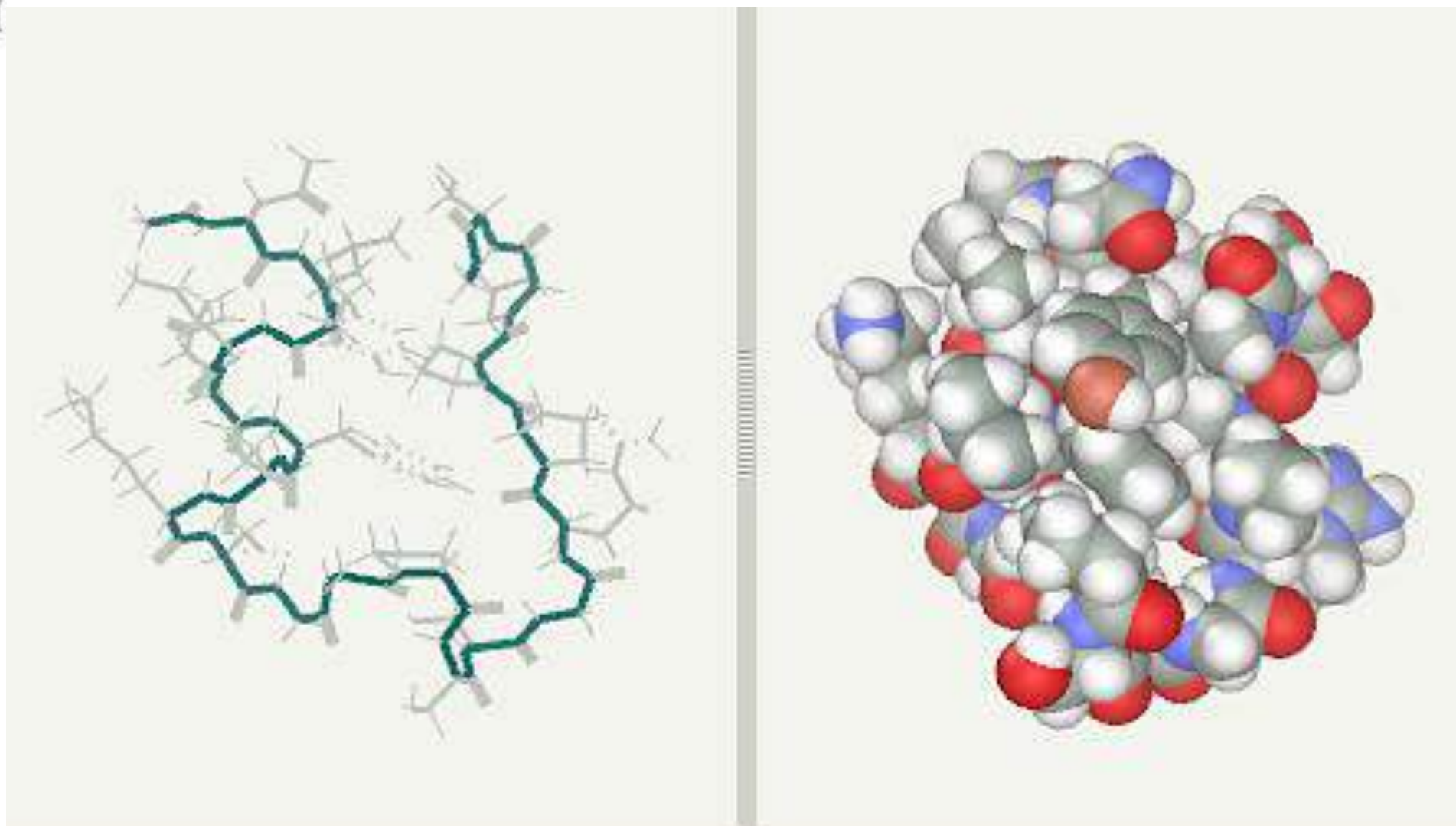
XIII_a

Cross-linked
fibrin clot



Origins

- How did life begin?
- Evolutionists are desperate to show that life or the precursors of life can be created in the laboratory under conditions similar to that of “early” earth
- Miller-Urey 1953
- What if they succeed?





Age of the Earth

Those that believe in Evolution need the earth and the universe to be very old in order to allow for the amount of time needed for evolution to occur

Does the Bible account of Creation preclude an old universe and earth?

Evidence for a young earth

1. Sea floor sediment gives an age of 12 million years not 3 billion.
2. Sea salt content gives an age of 42 million years
3. Magnetic field theories – 20,000 years
4. DNA vs radiometric rock data
5. Carbon-14 in deep “old” rock
6. Radiometric dating is inaccurate

Radiometric dating

Fossils

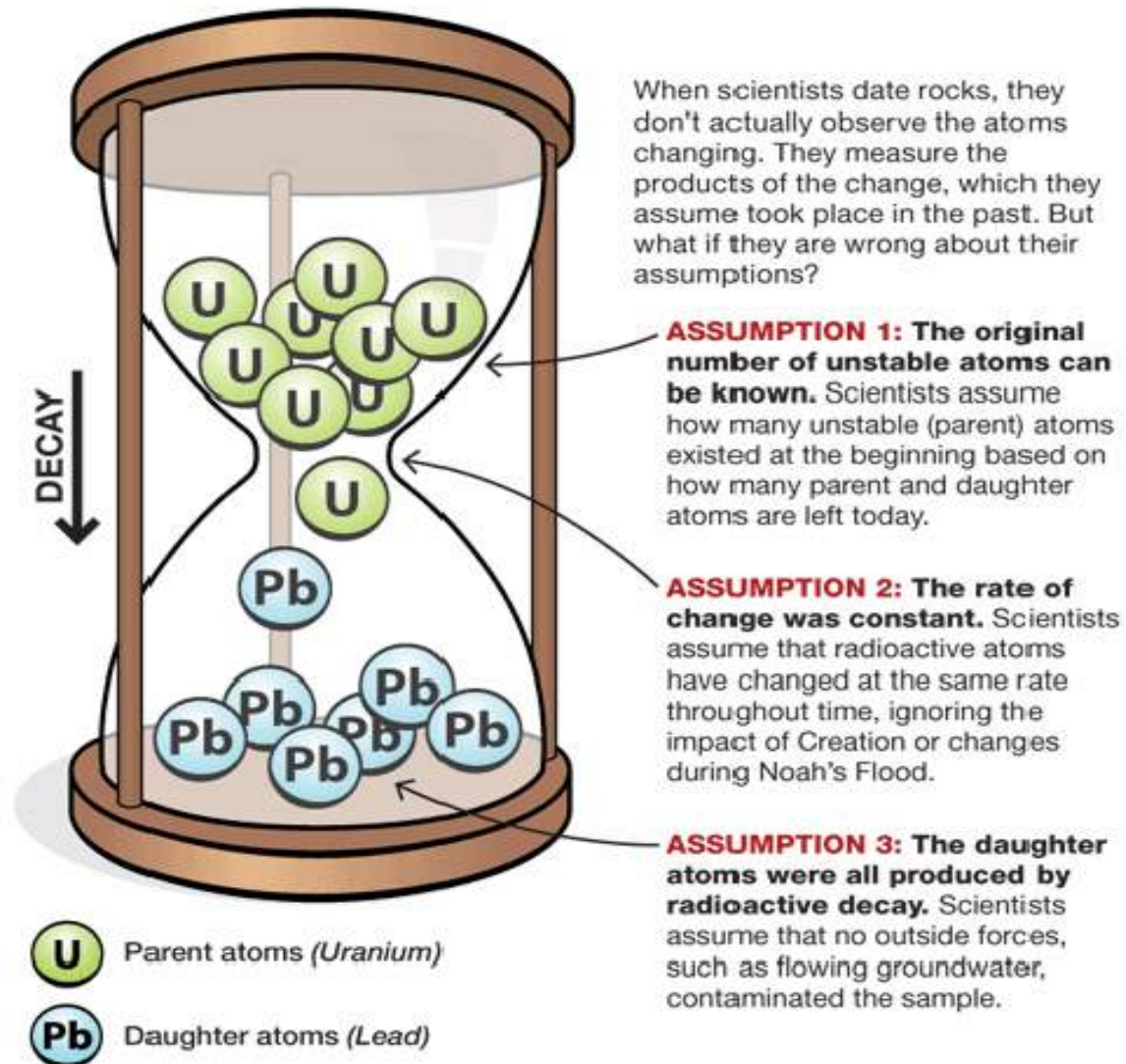
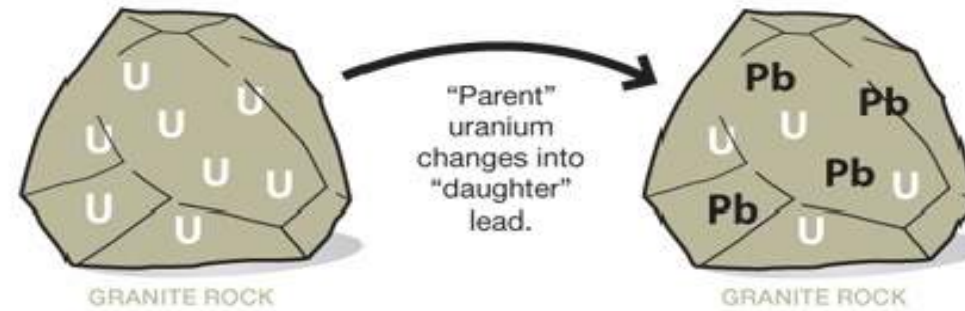
Sedimentary rock cannot be dated

Date igneous rock at the same level

You must make a number of assumptions in radiometric dating

wrong assumptions, wrong dates (figure 2)

Unstable atoms, such as uranium (*U*), eventually change into stable atoms, such as lead (*Pb*). The original version is called a parent atom (or isotope), and the new version is called a daughter atom.



Problems with radiometric dating

Yet lava flows that have occurred in the present have been tested soon after they erupted, and they invariably contained much more argon-40 than expected.¹ For example, when a sample of the lava in the Mt. St. Helens crater (that had been observed to form and cool in 1986) (Figure 1) was analyzed in 1996, it contained so much argon-40 that it had a calculated “age” of 350,000 years!² Similarly, lava flows on the sides of Mt. Ngauruhoe, New Zealand (Figure 2), known to be less than 50 years old, yielded “ages” of up to 3.5 million years.³

<https://answersingenesis.org/geology/radiometric-dating/radiometric-dating-problems-with-the-assumptions/>

The Problems with Radiometric Dating

1. A. A. Snelling, “Geochemical Processes in the Mantle and Crust,” in *Radioisotopes and the Age of the Earth: A Young-Earth Creationist Research Initiative*, L. Vardiman, A. A. Snelling, and E. F. Chaffin, eds. (El Cajon, California: Institute for Creation Research; St. Joseph, Missouri: Creation Research Society, 2000), pp. 123–304.
2. S. A. Austin, “Excess Argon within Mineral Concentrates from the New Dacite Lava Dome at Mount St. Helens Volcano,” *Creation Ex Nihilo Technical Journal* 10.3 (1996): 335–343.
3. A. A. Snelling, “The Cause of Anomalous Potassium-Argon ‘Ages’ for Recent Andesite Flows at Mt. Ngauruhoe, New Zealand, and the Implications for Potassium-Argon ‘Dating,’” in *Proceedings of the Fourth International Conference on Creationism*, ed. R. E. Walsh (Pittsburgh: Creation Science Fellowship, 1998), pp. 503–525.