

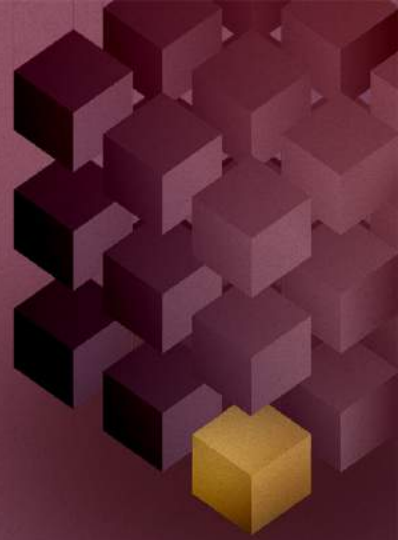


BY WHAT
AUTHORITY

LUKE 20 : 2 - 8

GOD COMMUNICATES LIKE WE COMMUNICATE

- Jesus assumed God's communication was obvious (Matt. 19:4-6; 16:3).
- God's word makes frequent appeals to our own experiences.
- He even does this specifically when speaking about our communication with one another (1 Cor. 2:11).



HOW WE COMMUNICATE

- We can tell something.
- We can show something.
- We can imply something.
- What other form of communication is there?
- Look at God's communication with Peter in Acts 10.



WHAT ABOUT IMPLICATION?

- Implication is to communicate something beyond a direct statement.
- Inference is when you “get” someone’s implication.
- We bind our implications on others.



WHAT ABOUT IMPLICATION?

- Some questions about implications:
 - What direct statements of God apply to you and I?
 - Do you believe that love for God and neighbor are the greatest commandments (Matt 22:34-40; Lk. 10:25-29)?
 - Will we be held accountable for putting the command to love our neighbors into practice (Matt. 25:44).

